



INCLUSIVE MENTAL HEALTH SERVICE FOR THE WELL BEING OF ASEAN

TEAM : SOUR CANDIES

TANYALUK PRASOMTONG
SUTTEERA SIRIMONGKOLMUANG



Chula
CHULALONGKORN UNIVERSITY

An Interview With A Mental Health Patient



*Anonymous interviewee
Thai, 20 years old,
struggling with depression and
ADHD*

**"I hope that we
will have a more
inclusive
and effective
mental health
service and
support system. "**

FINDINGS : Why Is Mental Health Support System Important?



792 million people around the world are estimated to have a mental health disorder in 2017



-Mental health crisis is **RISING** in the time of the **COVID-19** pandemic
 -1,000 percent jump in registration of hotline for emotional distress in the U.S.



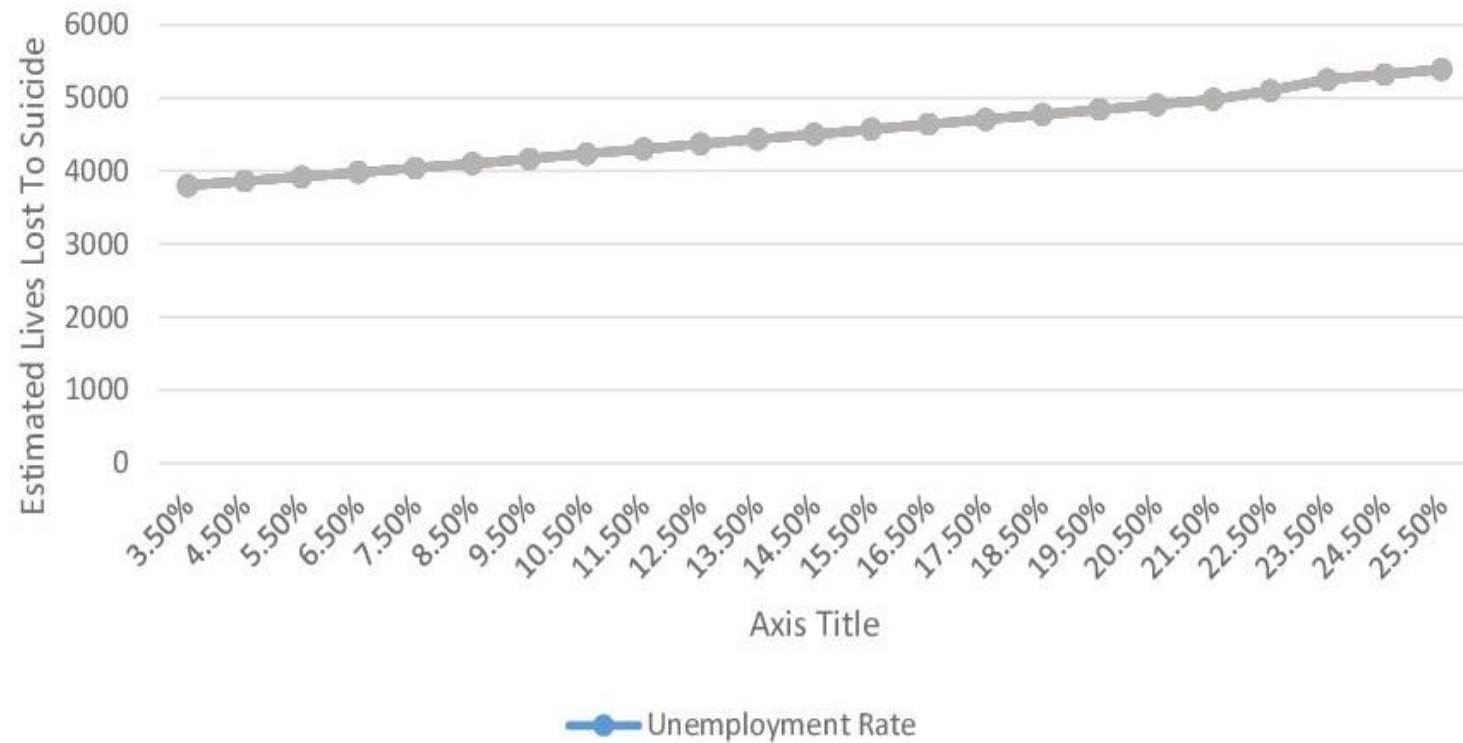
MENTAL HEALTH and **PHYSICAL HEALTH** are linked.

Poor mental health

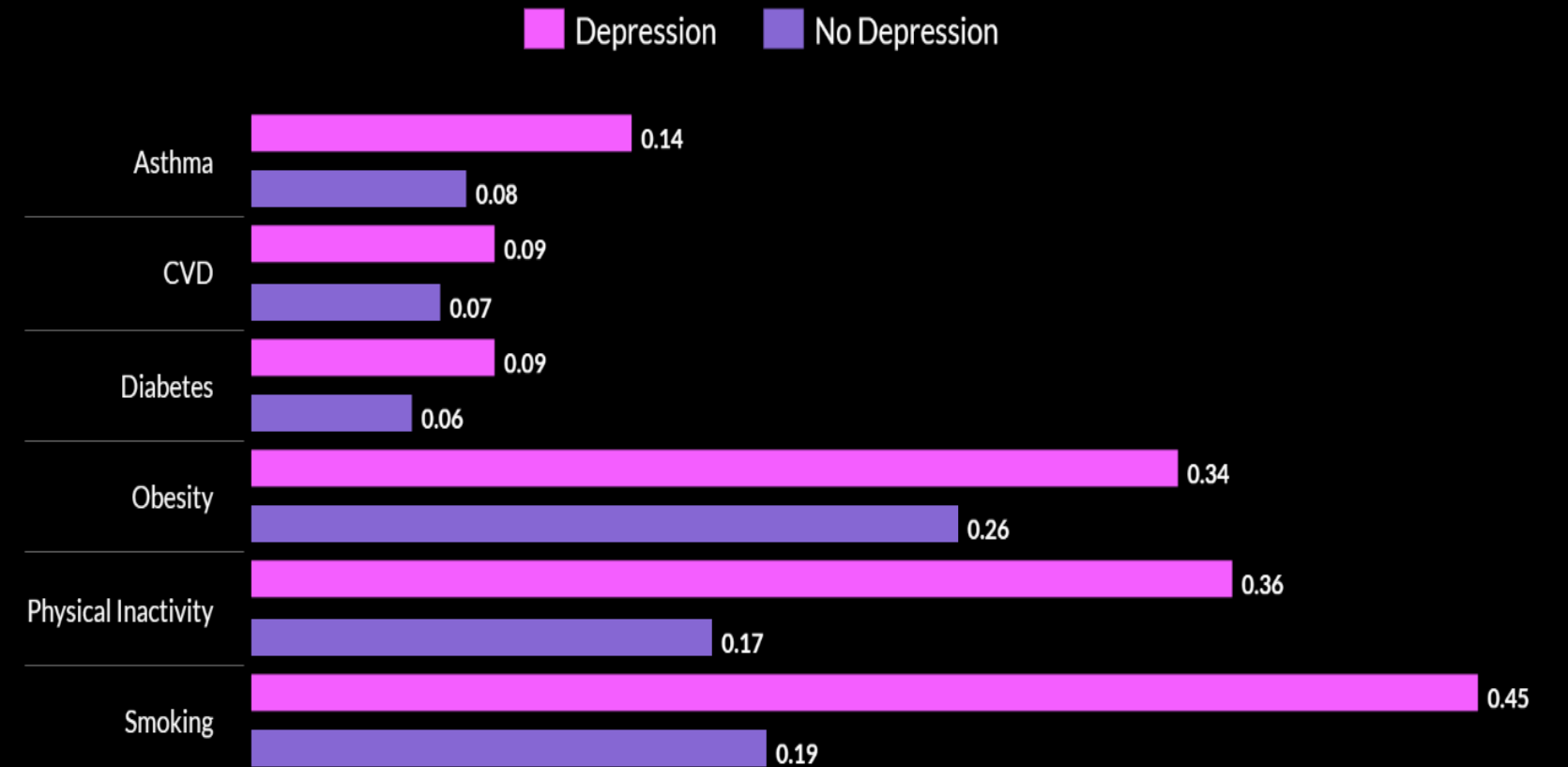


Chronic physical illnesses

Projected Increase in Lives Lost to Suicide with Increases in Unemployment Rates (Texas)



Prevalence of Health Risks And Chronic Diseases by Depression Status



Source : Meadows Mental Health Policy Institute Covid-19 Response Briefings

Source : Wisconsin Behavioral Risk Factor Survey (2006)

B.2 EQUITABLE ACCESS FOR ALL

iv. "Provide mechanisms and enhance institutional capacity to promote greater access to basic social services for all, such as **HEALTH SERVICES**"

II. Characteristics and elements of AEC

"The AEC is the realisation of the end goal of economic integration as espoused in the Vision 2020, which is based on a convergence of interests of ASEAN Member Countries to deepen and broaden **ECONOMIC INTEGRATION**ASEAN shall act in accordance to the principles of an open, **OUTWARD-LOOKING, INCLUSIVE,** and market-driven economy....."

cost of lost of unproductivity?

equitable?

inclusive?

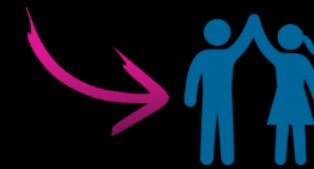
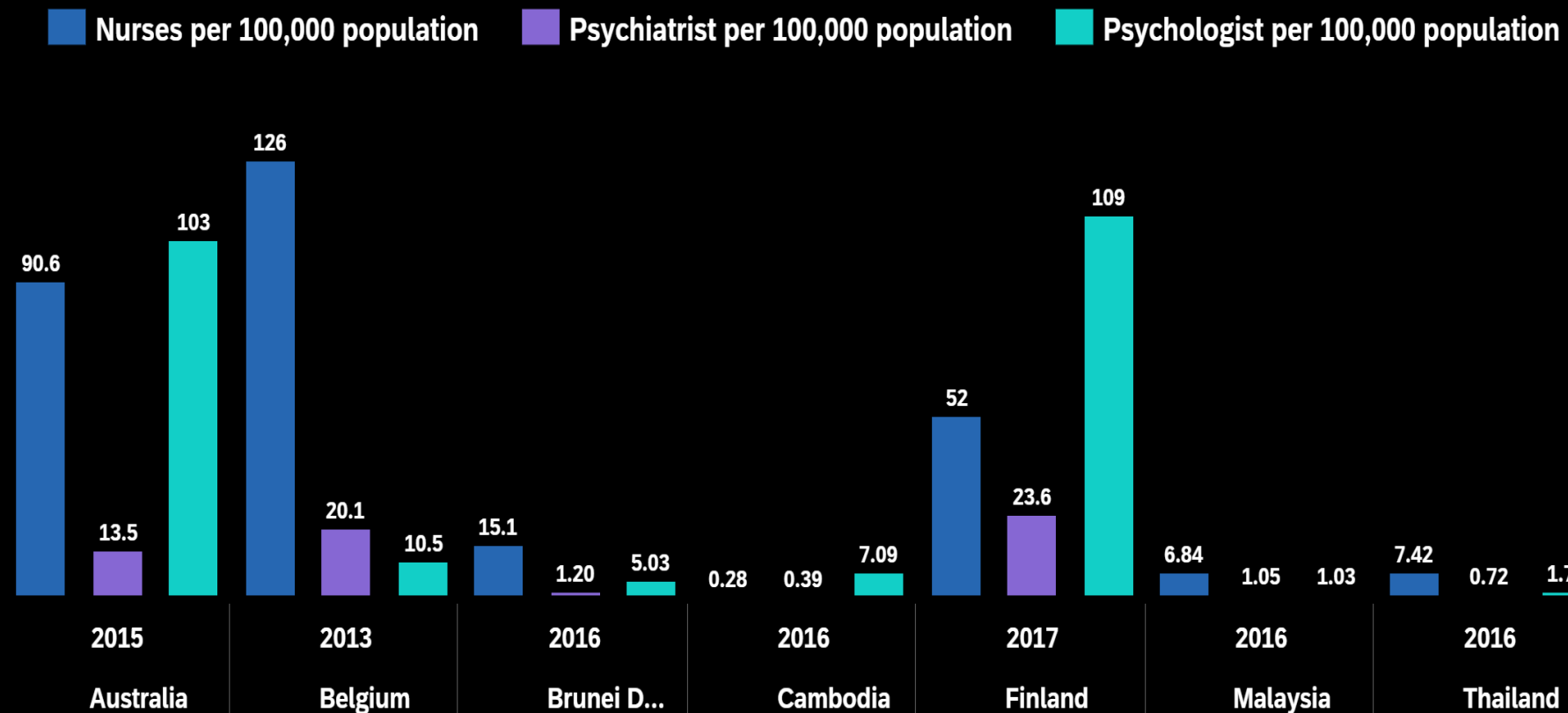
untreated mental illness cost?

FINDINGS : Low Accessibility To Mental Health Service

SHORTAGE OF MENTAL HEALTH OFFICERS

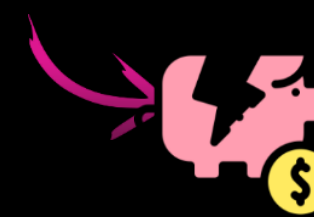
LOW ACCESSIBILITY TO SOME GROUPS OF PEOPLE

Nurses per 100,000 population, Psychiatrist per 100,000 population and others per Country, Year for Actual



MINORS

Minors in **Thailand** and **Malaysia** need to be authorized by their guardians for mental illness treatment.



PEOPLE STRICKEN IN POVERTY/PEOPLE IN RURAL AREAS

Mental disorders increases tendency of descending into poverty and poverty increases risks of mental disorders.

Lack of health insurance

Stigma

Have to travel for a long distance to access care

2% of national health budgets is dedicated to mental health=harder to access treatment with reduced cost

Source : World Health Organization

Case Study : Thailand



1,734,410 mental health patients in the system

886 psychiatrists

1 psychiatrist has to admit 30-50 patients within 3-4 hrs

Number of medical students specialized in psychiatry is restricted by the number of the teachers

RECOMMENDATIONS : INCREASE THE NUMBER OF MENTAL HEALTHCARE PROVIDERS

LONG-TERM SOLUTIONS

Increase Mental Health Budget Allocation



Psychiatry Teaching Reformation :
1. Psychiatry Rotation
2. More psychiatry residents practicing in rural areas or community mental health centers



Increase in number and more inclusive distribution of mental healthcare providers



SHORT-TERM SOLUTIONS



PAs and Nurses With Specialized Training In Mental Health
+
Supervisions From Psychiatrists
+
Uncomplicated Cases



TECHNOLOGY-BASED SOLUTIONS

Applications - access mental health officials
- track behavioral patterns

Hotline, Contact Crisis Center

Tools which can deliver cognitive behavioral therapy to substitute in-person therapies

RECOMMENDATIONS : INCREASE ACCESSIBILITY TO MENTAL HEALTH SERVICE

COLLABORATIVE CARE

PREVENTION, IDENTIFICATION, ASSESSMENT AND TREATMENT
(All sectors in community esp. the government)



Screening process in primary healthcare

Integrate protocols for both mental and physical healthcare

Education on mental health



Not only to know the picture or symptoms but also signs or behavioral patterns that indicates the patients' crisis

Macro-policies to enhance quality of life and reduce mental health risks



-improve access to education

PREVENTION

-tackle poverty

-improve nutrition

IDENTIFICATION

-reduce harms from narcotics or other substances

-reduce domestic abuse

ASSESSMENT

-parental mental illness

-educational institutions and workplace support groups and protocols

TREATMENT

Lower Restrictions for Minor's Mental Health Accessibility On A Case-by-Case Basis

Community's watchmen and Checkup Calls (Social Protection)

REFERENCES

https://www.who.int/mental_health/management/info_sheet.pdf?ua=1

<https://asean.org/storage/2017/02/55.-December-2016-ASEAN-Mental-Health-System.pdf>

https://www.who.int/gho/mental_health/human_resources/psychiatrists_nurses/en/#:~:text=In%202014%2D2016%2C%20low%2D,more%20than%2075%20times%20greater. horturl.at/puAQ0

<https://ourworldindata.org/mental-health#:~:text=It's%20estimated%20that%20970%20million,4%20percent%20of%20the%20population. https://www.mentalhealth.org.uk/a-to-z/p/physical-health-and-mental-health>

<https://www.mentalhealth.org.uk/a-to-z/s/stigma-and-discrimination>

<https://www.healthtodaythailand.in.th/%E0%B8%88%E0%B8%B4%E0%B8%95%E0%B9%81%E0%B8%9E%E0%B8%97%E0%B8%A2%E0%B9%8C%E0%B9%84%E0%B8%97%E0%B8%A2/>

[https://www.who.int/news-room/fact-sheets/detail/adolescent-mental-health#:~:text=Mental%20health%20conditions%20account%20for,undetected%20and%20untreated%20\(1\).](https://www.who.int/news-room/fact-sheets/detail/adolescent-mental-health#:~:text=Mental%20health%20conditions%20account%20for,undetected%20and%20untreated%20(1).)

https://www.who.int/mental_health/policy/development/1_Breakingviciouscycle_Infosheet.pdf?

[ua=1#:~:text=Common%20mental%20disorders%20are%20about,suffer%20from%20common%20mental%20disorders3.](https://www.who.int/mental_health/policy/development/1_Breakingviciouscycle_Infosheet.pdf?ua=1#:~:text=Common%20mental%20disorders%20are%20about,suffer%20from%20common%20mental%20disorders3.)

<https://www.aamc.org/news-insights/addressing-escalating-psychiatrist-shortage>

https://www.who.int/mental_health/management/info_sheet.pdf

<https://www.nimh.nih.gov/health/topics/technology-and-the-future-of-mental-health-treatment/index.shtml#:~:text=Technology%20has%20opened%20a%20new,increase%20understanding%20of%20mental%20wellbeing.>

<https://www.nimh.nih.gov/about/directors/thomas-insel/blog/2015/mortality-and-mental-disorders.shtml#:~:text=The%20answer%2C%20based%20on%20the,rate%20as%20the%20general%20population.>

<https://www.nimh.nih.gov/about/directors/thomas-insel/blog/2015/mortality-and-mental-disorders.shtml#:~:text=The%20answer%2C%20based%20on%20the,rate%20as%20the%20general%20population.>

[https://www.thelancet.com/journals/lancet/article/PIIS0140-6736\(10\)62181-2/fulltext](https://www.thelancet.com/journals/lancet/article/PIIS0140-6736(10)62181-2/fulltext)

<https://ontario.cmha.ca/documents/connection-between-mental-and-physical-health/>

<https://ontario.cmha.ca/documents/the-relationship-between-mental-health-mental-illness-and-chronic-physical-conditions/>

<https://ontario.cmha.ca/documents/the-relationship-between-mental-health-mental-illness-and-chronic-physical-conditions/>

<https://www.texasstateofmind.org/uploads/whitepapers/COVID-MHSUDImpacts.pdf>

<https://www.washingtonpost.com/health/2020/05/04/mental-health-coronavirus/>

<https://ourworldindata.org/mental-health#:~:text=It's%20estimated%20that%20970%20million,4%20percent%20of%20the%20population.>

<https://www.dhs.wisconsin.gov/publications/p0/p00066.pdf>

Q & A